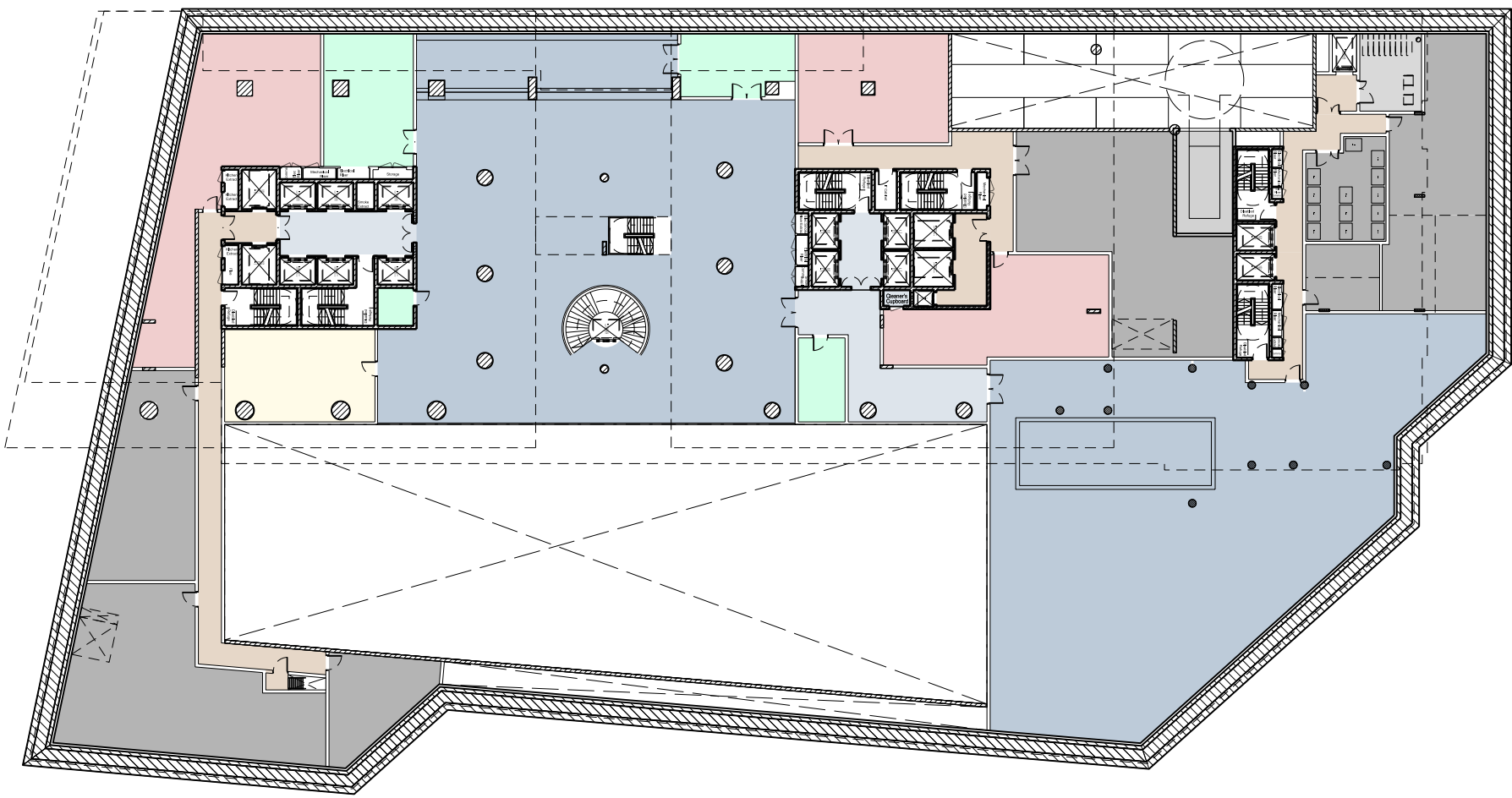
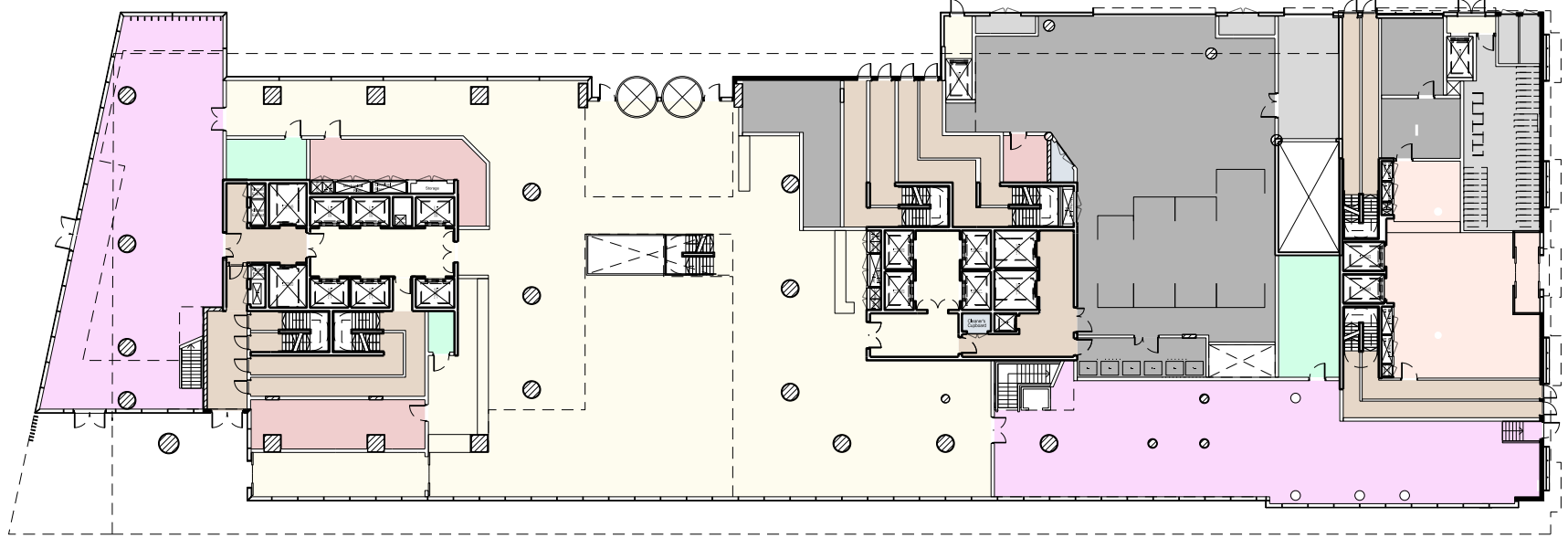


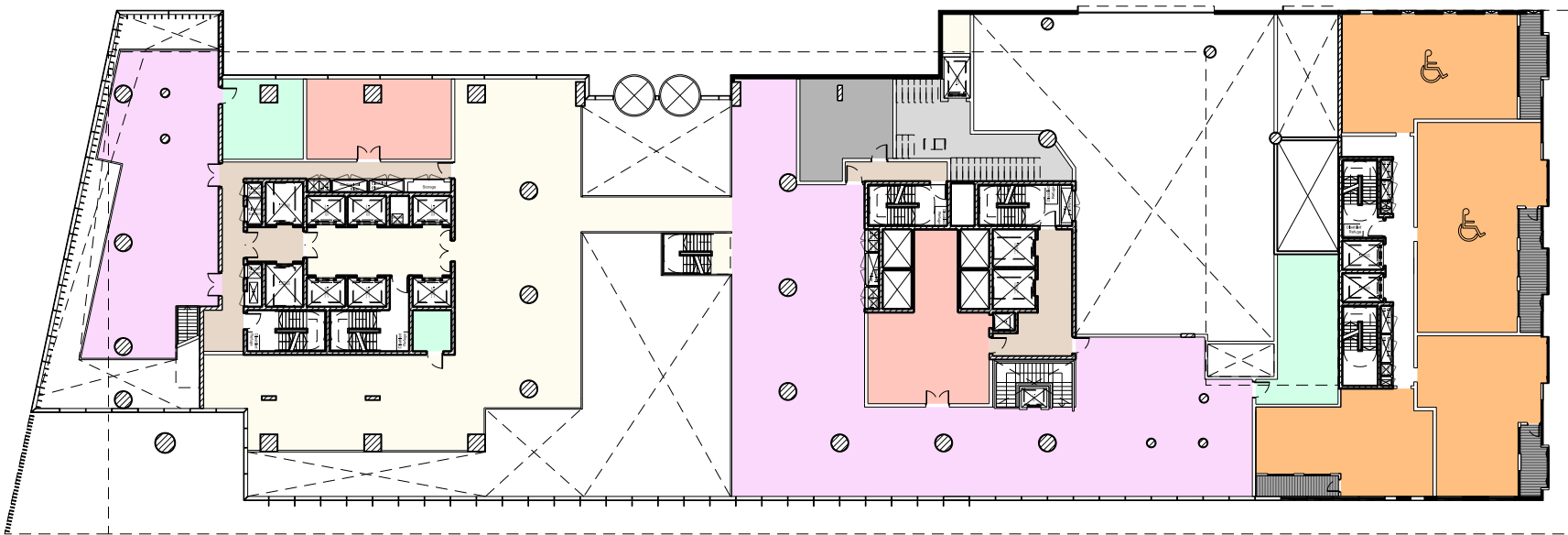
Level B2



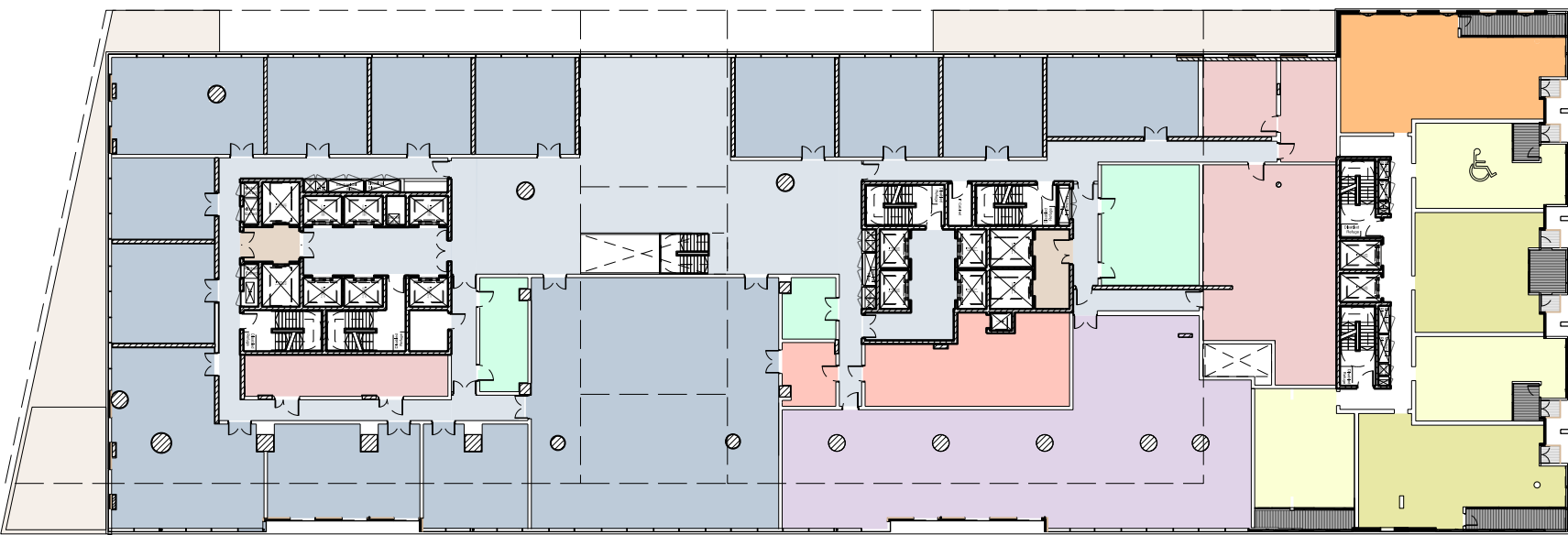
Level B1



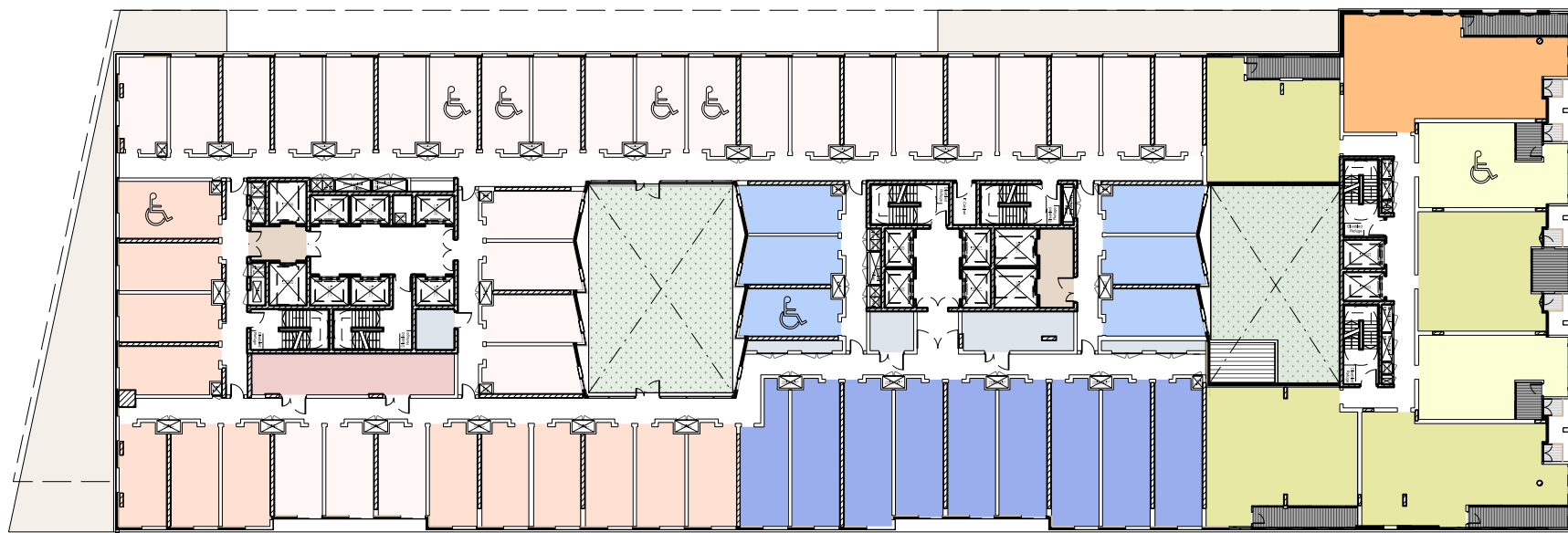
Level 00



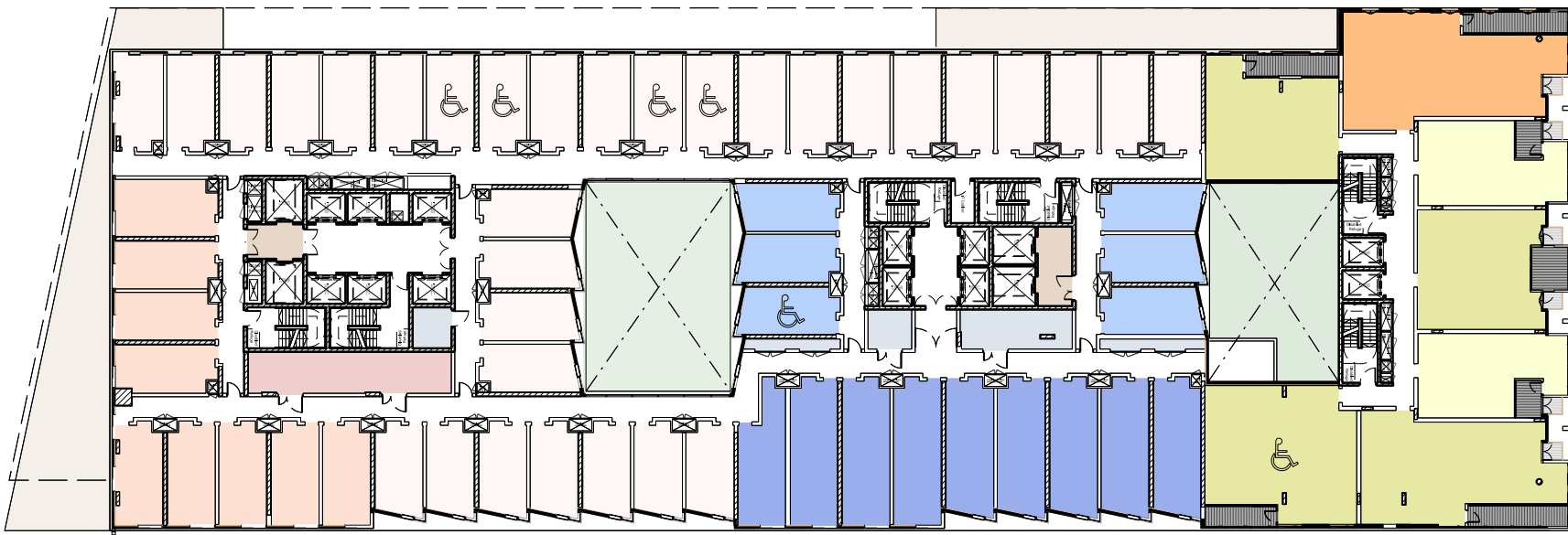
Level MZ



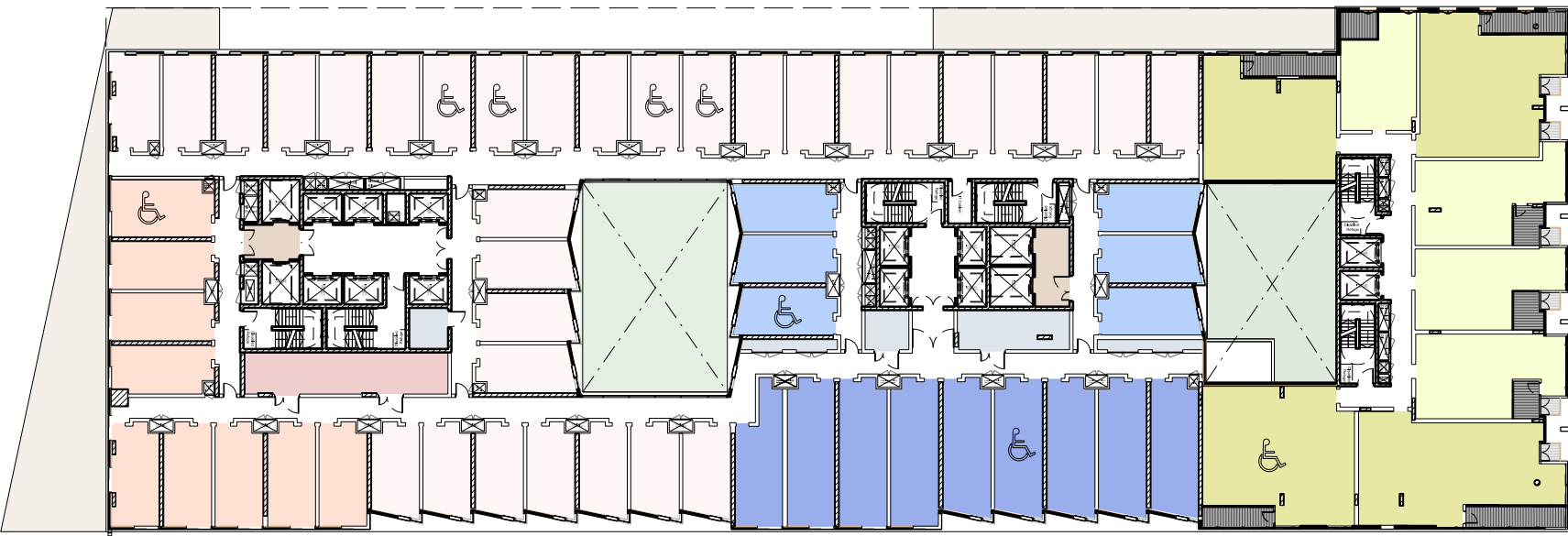
Level 01



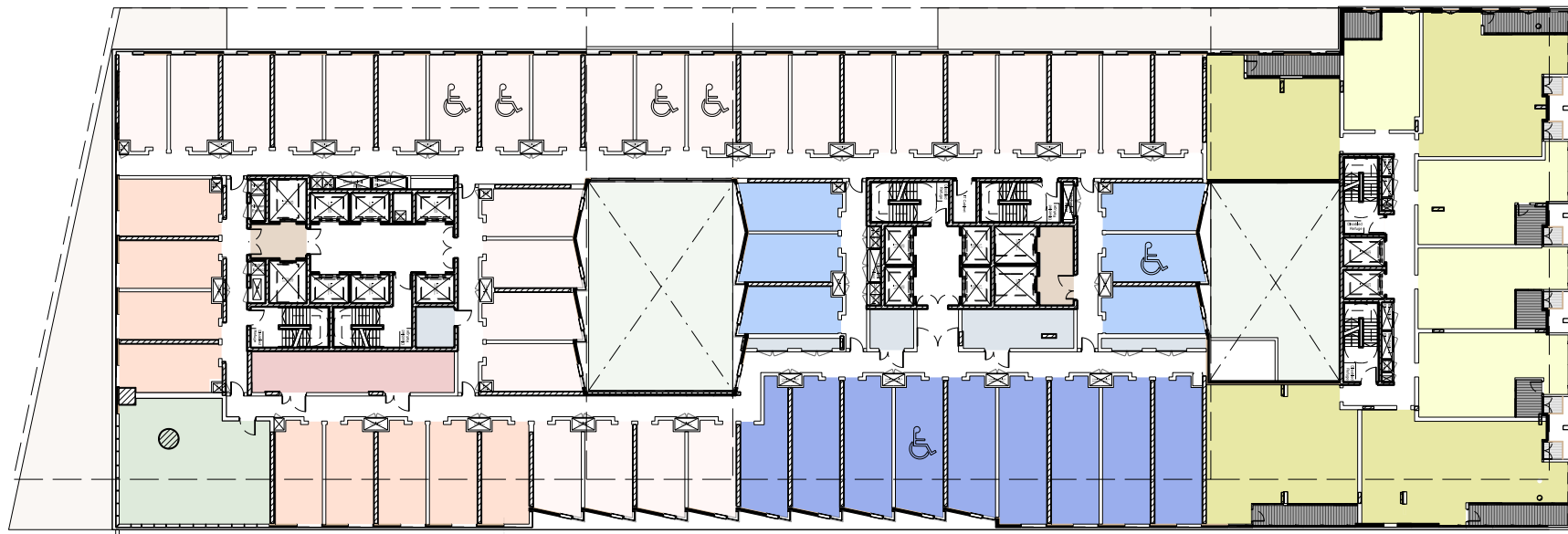
Level 02



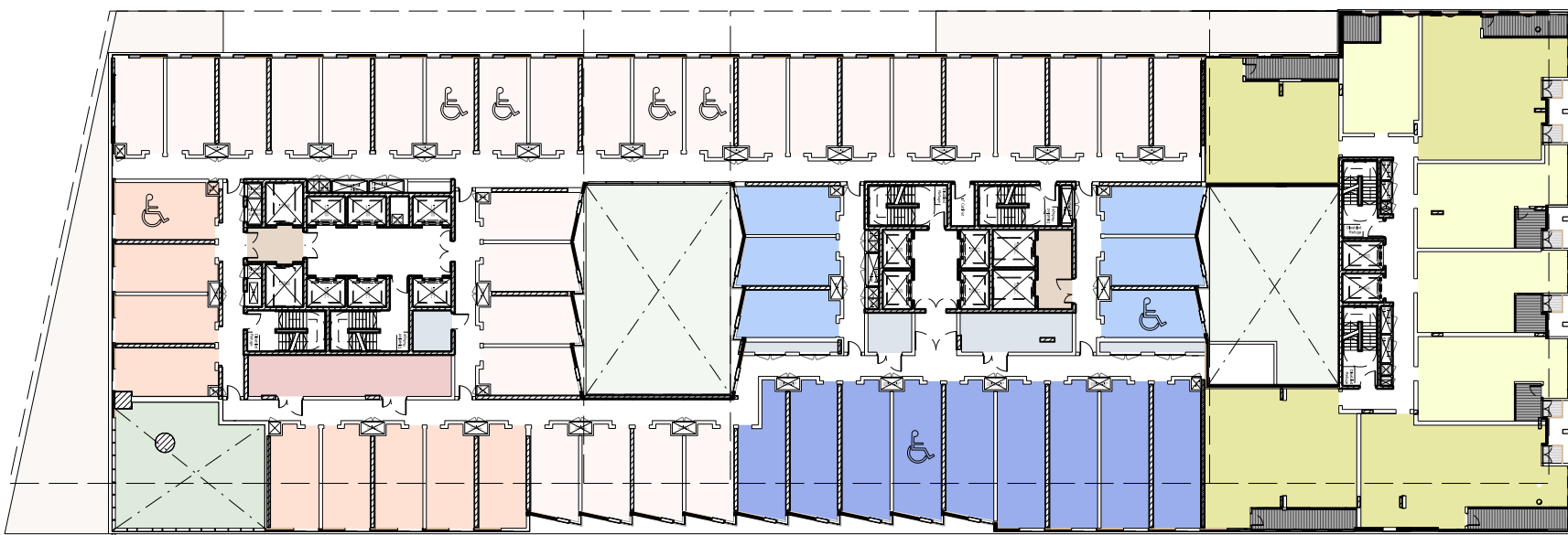
Level 03



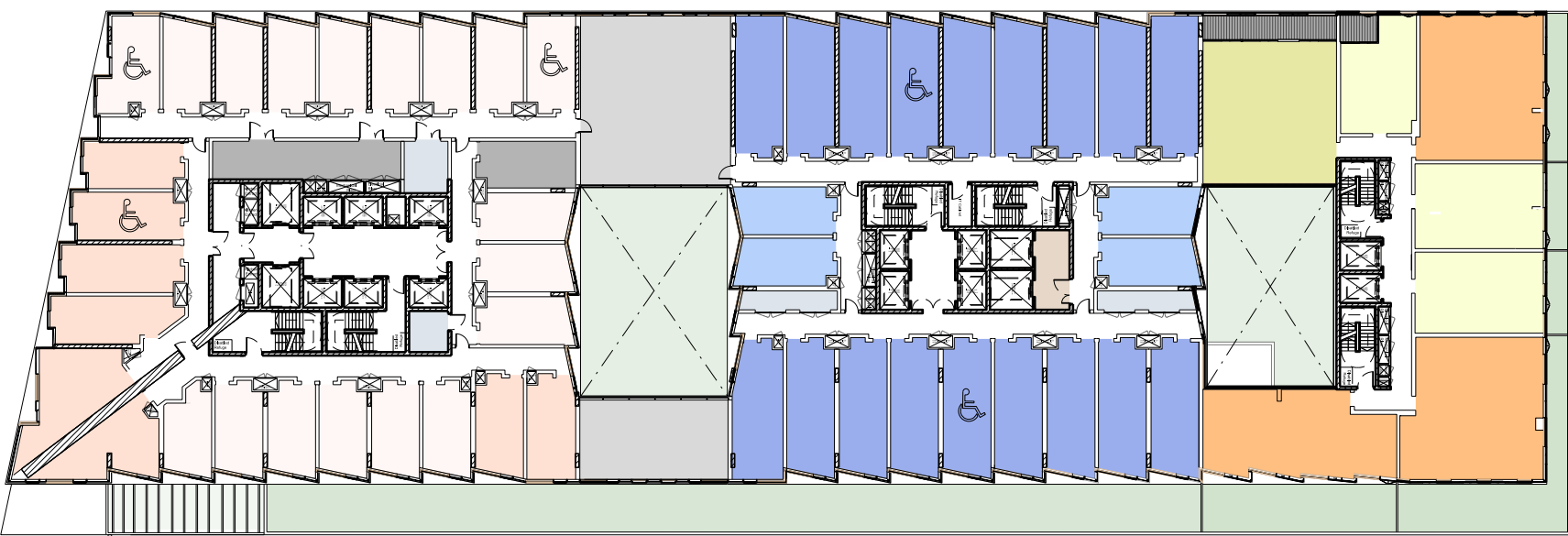
Level 04



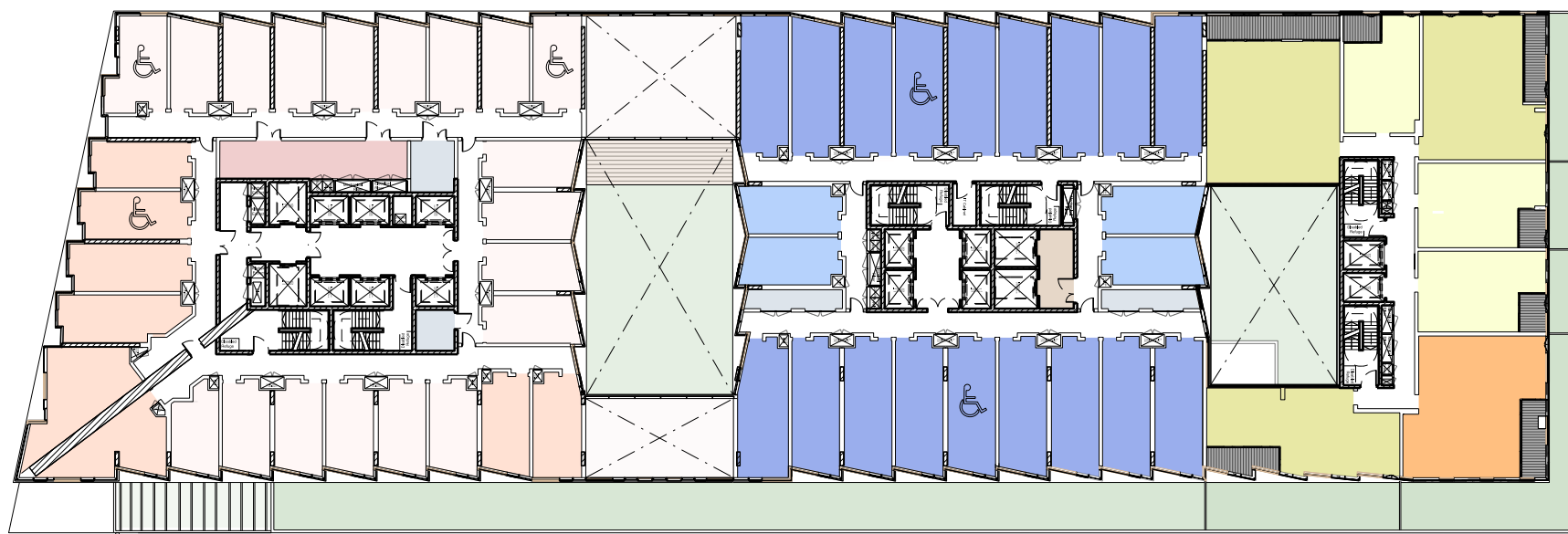
Level 05



Level 06



Level 07



Level 08



Serviced Residences - Studio 1
Serviced Residences - Studio 2
Serviced Residences - Studio 3



Residential - 3 Bed
Residential - 2 Bed
Residential - 1 Bed



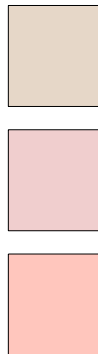
Hotel - Standard
Hotel - Superior
Hotel - Deluxe



Hotel - Suite
Hotel Lobby
Restaurant / Bar



Plant
Hotel - Function
Hotel - Storage & WC



Hotel - Back of House Circulation
Staff Facilities
Kitchens



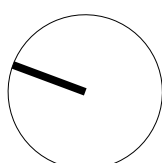
Linen Stores
Wheelchair Accessible

This drawing is copyright
Do not scale off dimensions.
All dimensions to be checked on site by contractor.
Contractor to report any dimensional discrepancies,
errors or omissions prior to commencing on site.

5 0 5 10 20 30m

NOTE:
To be read in conjunction with schedule
10106-A-SCH-Z0-Z100-9002_Master Schedule

NORTH



Rev	Date	Description
-	15/06/2018	Full Planning Application
A	11/01/2019	GLA Call-In Amendments

Project Title
10106
KENSINGTON FORUM HOTEL
LONDON, UK

Status
PLANNING

Drawing Title
Key Plans

Job No 10106	Scale 1:500(A1) NTS(A3)	Date JAN 2019
Drawing No 10106-A-DRG-Z0-F100-2000	Revision A	

SimpsonHaugh
AND PARTNERS

MANCHESTER
Riverside, 4 Commercial St
Manchester M15 4BQ
+44 (0)161 835 2345
www.simpsonhaugh.com
mail@simpsonhaugh.com

LONDON
5-8 Roberts Place
London EC1R 9BQ
+44 (0)20 7549 4000
mail@simpsonhaugh.com